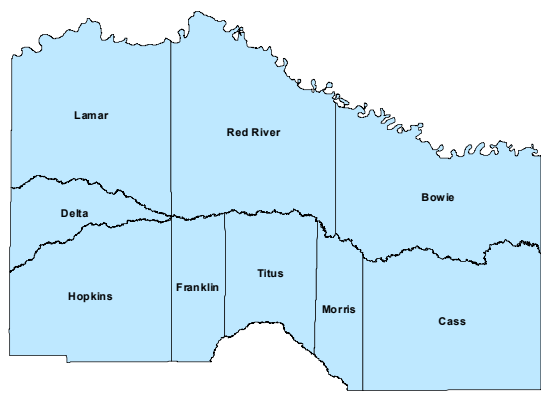
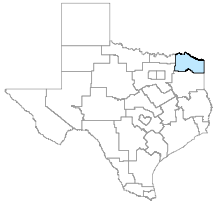


North East Workforce Development Area

July 2019



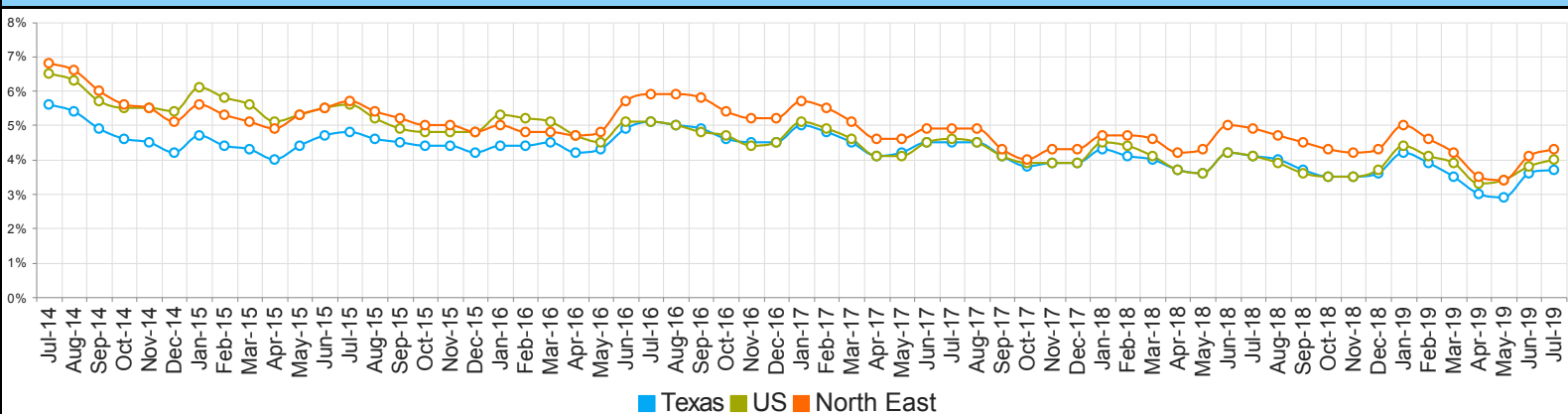
WDA Labor Force Statistics				
	Jul-19	Jun-19	Jul-18	Yearly Change
Civilian Labor Force	121,931	123,037	122,287	-356
Employed	116,688	118,035	116,319	369
Unemployed	5,243	5,002	5,968	-725
Unemployment Rate	4.3%	4.1%	4.9%	-0.6%

Texas Labor Force Statistics				
	Jul-19	Jun-19	Jul-18	Yearly Change
Civilian Labor Force	14,066,138	14,041,604	13,887,986	178,152
Employed	13,542,200	13,540,702	13,320,601	221,599
Unemployed	523,938	500,902	567,385	-43,447
Unemployment Rate	3.7%	3.6%	4.1%	-0.4%

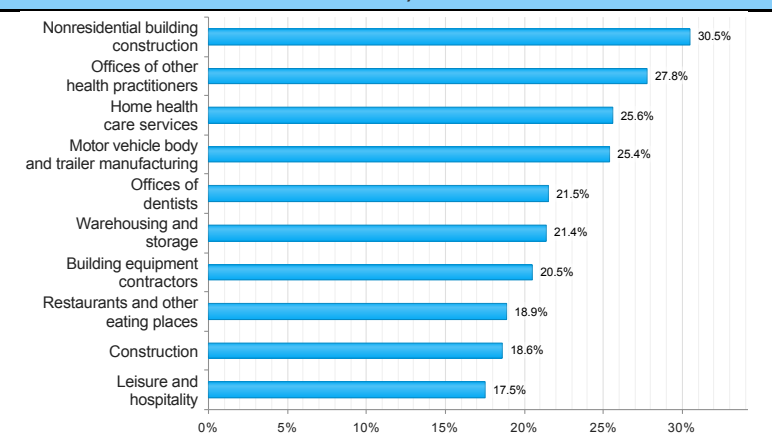
US Labor Force Statistics				
	Jul-19	Jun-19	Jul-18	Yearly Change
Civilian Labor Force	164,941,000	164,120,000	163,734,000	1,207,000
Employed	158,385,000	157,828,000	157,004,000	1,381,000
Unemployed	6,556,000	6,292,000	6,730,000	-174,000
Unemployment Rate	4.0%	3.8%	4.1%	-0.1%

Continued Claims for the Week of the 12th				
	Jul-19	Jun-19	Jul-18	Yearly Change
WDA	942	917	1,184	-242
Texas	103,612	101,617	103,675	-63

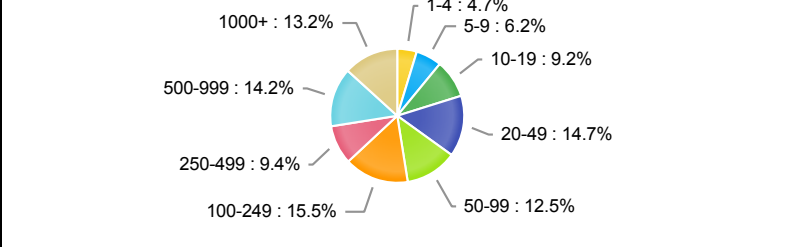
Historical Unemployment Rates



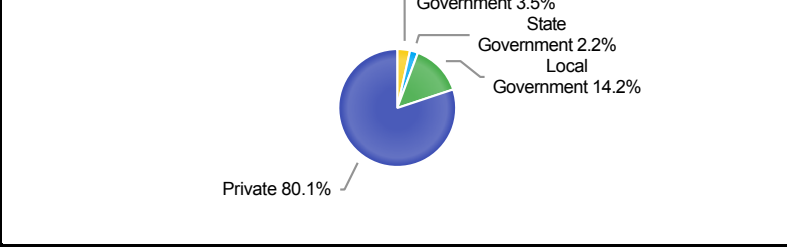
Projected Top Ten Fastest Growing Industries in WDA (% Growth 2016-2026)



Employment by Size Class (1st Quarter 2019)



Employment by Ownership (1st Quarter 2019)

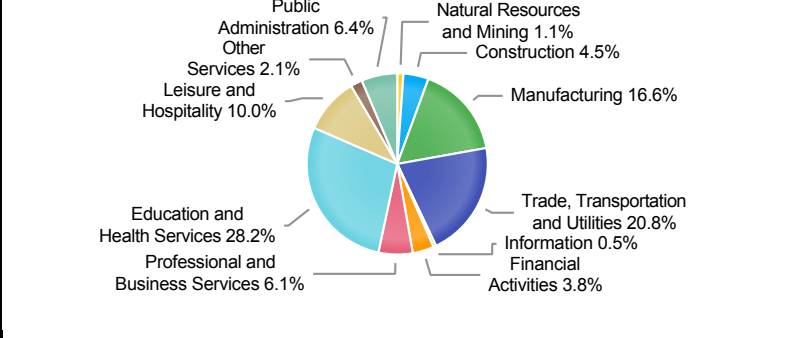


Average Weekly Wage (1st Quarter 2019)					
	Q1 2019	Q4 2018	Q1 2018	Quarterly Change	Yearly Change
WDA	\$774	\$804	\$759	-\$30	\$15
Texas	\$1,204	\$1,148	\$1,168	\$56	\$36
US	N/A	\$1,144	\$1,152	N/A	N/A

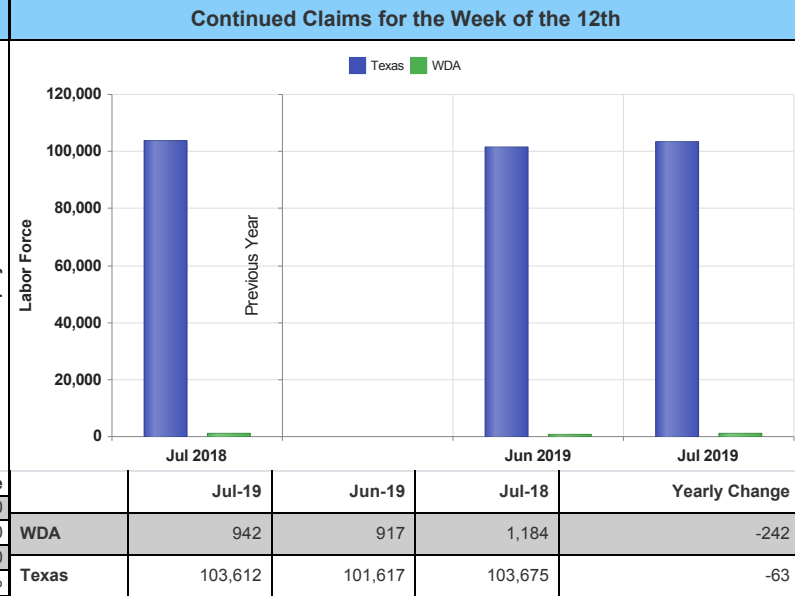
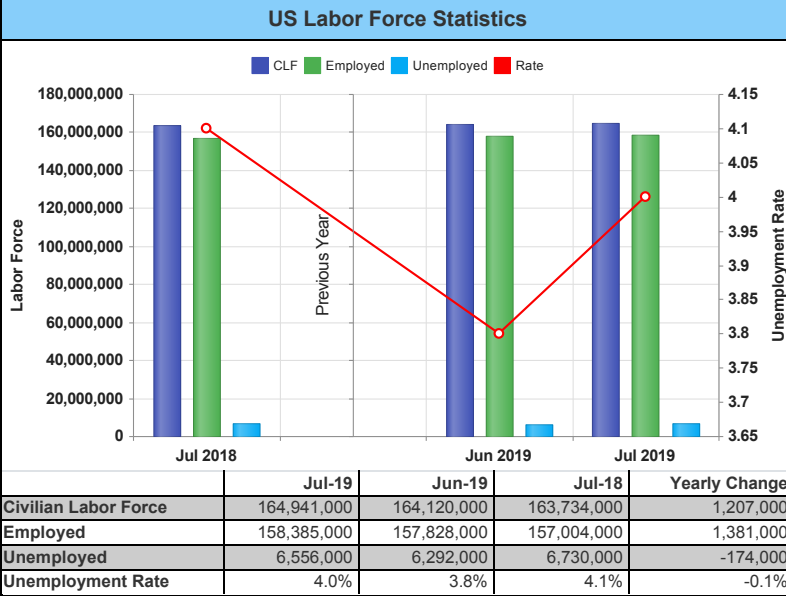
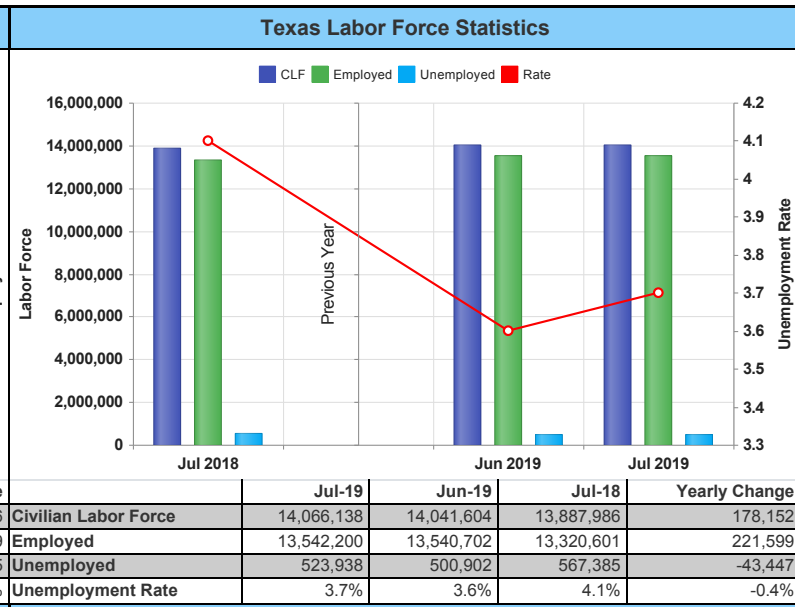
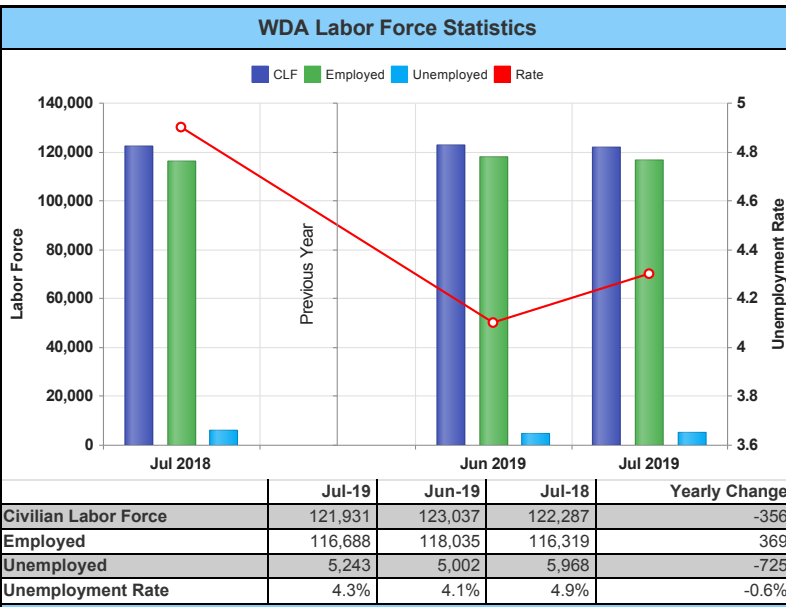
Employment by Industry (1st Quarter 2019, Percent Change)

Industry	Employment	% of Total	% Quarterly Change	% Yearly Change
Natural Resources and Mining	1,250	1.1%	-6.4%	-12.8%
Construction	4,959	4.5%	-1.1%	7.9%
Manufacturing	18,220	16.6%	2.5%	3.4%
Trade, Transportation and Utilities	22,843	20.8%	-1.2%	-0.6%
Information	586	0.5%	1.6%	-16.8%
Financial Activities	4,141	3.8%	-1.4%	-3.3%
Professional and Business Services	6,718	6.1%	0.9%	4.3%
Education and Health Services	30,991	28.2%	0.3%	1.4%
Leisure and Hospitality	10,967	10.0%	-0.1%	3.0%
Other Services	2,327	2.1%	0.2%	-2.3%
Public Administration	7,004	6.4%	0.2%	-1.7%

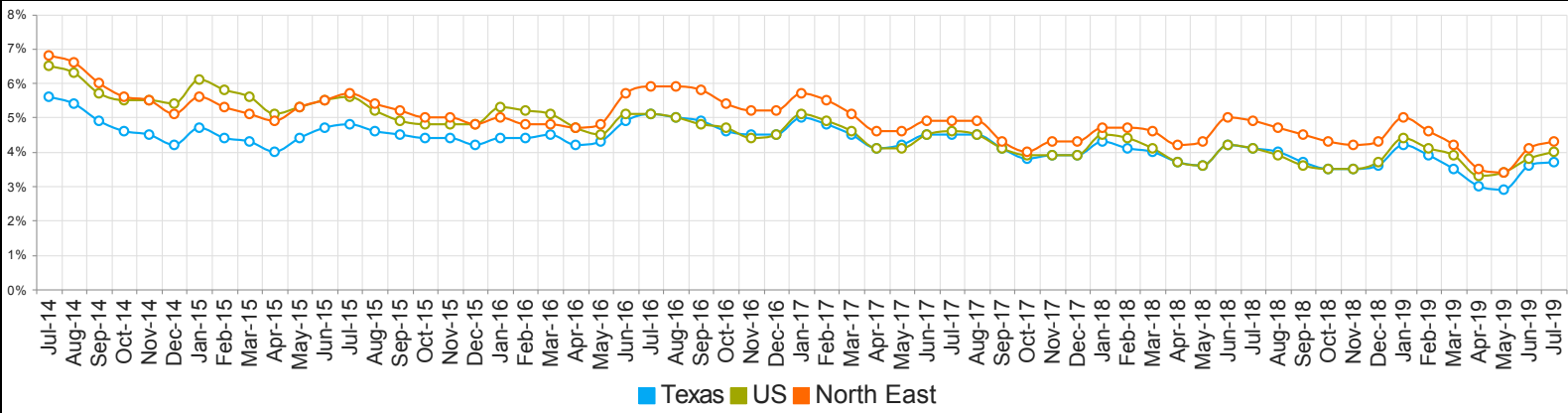
Employment by Industry (1st Quarter 2019)



*The average weekly wage for U.S. for the latest quarter is not available. It will be updated shortly.

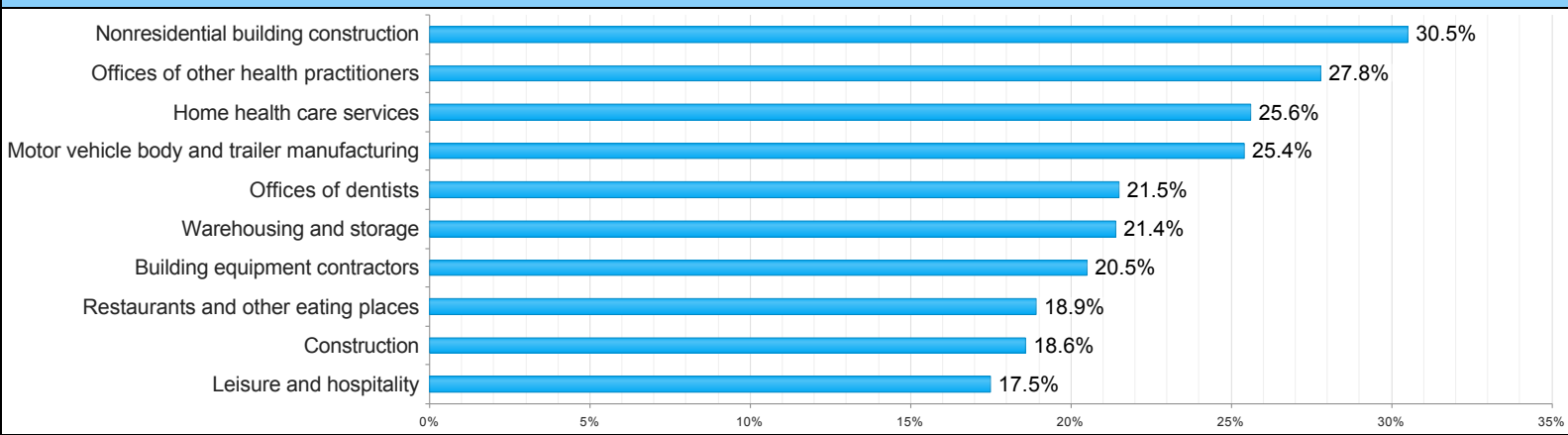


Historical Unemployment Rates



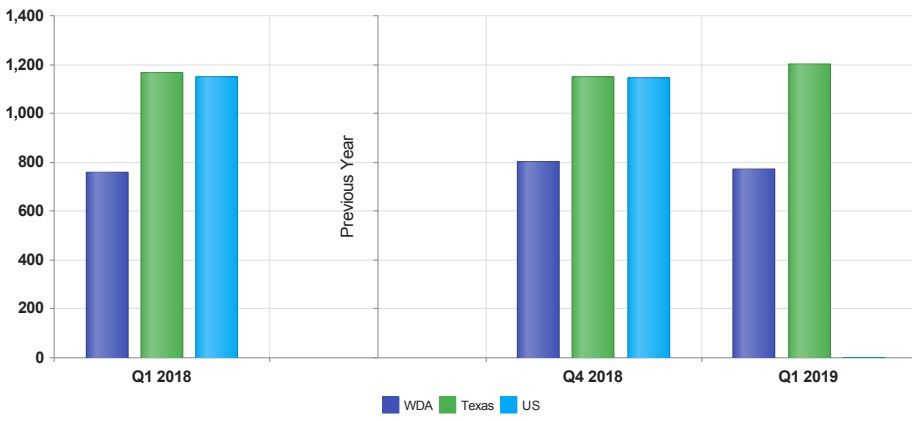
Months	WDA	Texas	US
Jul-19	4.3	3.7	4.0
Jun-19	4.1	3.6	3.8
May-19	3.4	2.9	3.4
Apr-19	3.5	3.0	3.3
Mar-19	4.2	3.5	3.9
Feb-19	4.6	3.9	4.1
Jan-19	5.0	4.2	4.4
Dec-18	4.3	3.6	3.7
Nov-18	4.2	3.5	3.5
Oct-18	4.3	3.5	3.5
Sep-18	4.5	3.7	3.6
Aug-18	4.7	4.0	3.9
Jul-18	4.9	4.1	4.1
Jun-18	5.0	4.2	4.2
May-18	4.3	3.6	3.6
Apr-18	4.2	3.7	3.7
Mar-18	4.6	4.0	4.1
Feb-18	4.7	4.1	4.4
Jan-18	4.7	4.3	4.5
Dec-17	4.3	3.9	3.9
Nov-17	4.3	3.9	3.9
Oct-17	4.0	3.8	3.9
Sep-17	4.3	4.1	4.1
Aug-17	4.9	4.5	4.5
Jul-17	4.9	4.5	4.6
Jun-17	4.9	4.5	4.5
May-17	4.6	4.2	4.1
Apr-17	4.6	4.1	4.1
Mar-17	5.1	4.5	4.6
Feb-17	5.5	4.8	4.9
Jan-17	5.7	5.0	5.1
Dec-16	5.2	4.5	4.5
Nov-16	5.2	4.5	4.4
Oct-16	5.4	4.6	4.7
Sep-16	5.8	4.9	4.8
Aug-16	5.9	5.0	5.0
Jul-16	5.9	5.1	5.1
Jun-16	5.7	4.9	5.1
May-16	4.8	4.3	4.5
Apr-16	4.7	4.2	4.7
Mar-16	4.8	4.5	5.1
Feb-16	4.8	4.4	5.2
Jan-16	5.0	4.4	5.3
Dec-15	4.8	4.2	4.8
Nov-15	5.0	4.4	4.8
Oct-15	5.0	4.4	4.8
Sep-15	5.2	4.5	4.9
Aug-15	5.4	4.6	5.2
Jul-15	5.7	4.8	5.6
Jun-15	5.5	4.7	5.5
May-15	5.3	4.4	5.3
Apr-15	4.9	4.0	5.1
Mar-15	5.1	4.3	5.6
Feb-15	5.3	4.4	5.8
Jan-15	5.6	4.7	6.1
Dec-14	5.1	4.2	5.4
Nov-14	5.5	4.5	5.5
Oct-14	5.6	4.6	5.5
Sep-14	6.0	4.9	5.7
Aug-14	6.6	5.4	6.3
Jul-14	6.8	5.6	6.5

Projected Top Ten Fastest Growing Industries in WDA (% Growth 2016-2026)



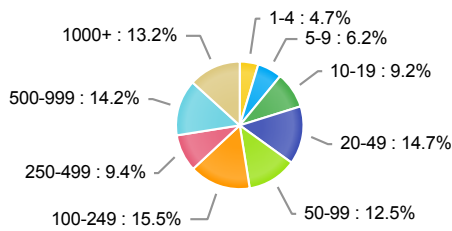
Industry Title	Percent Change
Nonresidential building construction	30.5
Offices of other health practitioners	27.8
Home health care services	25.6
Motor vehicle body and trailer manufacturing	25.4
Offices of dentists	21.5
Warehousing and storage	21.4
Building equipment contractors	20.5
Restaurants and other eating places	18.9
Construction	18.6
Leisure and hospitality	17.5

Average Weekly Wage (1st Quarter 2019)



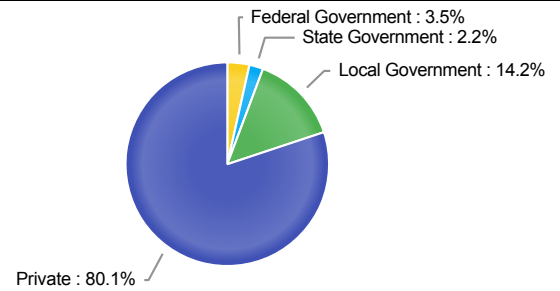
	Q1 2019	Q4 2018	Q1 2018	Quarterly Change	Yearly Change
WDA	\$774	\$804	\$759	-\$30	\$15
Texas	\$1,204	\$1,148	\$1,168	\$56	\$36
US	N/A	\$1,144	\$1,152	N/A	N/A

Employment by Size Class (1st Quarter 2019)



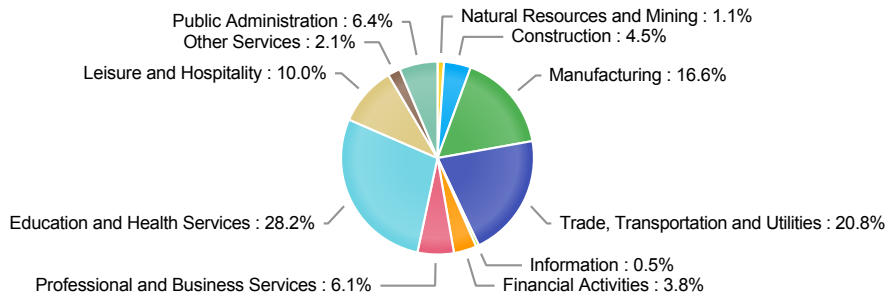
Number of Employees in Firm	Percentage
1-4	4.7%
5-9	6.2%
10-19	9.2%
20-49	14.7%
50-99	12.5%
100-249	15.5%
250-499	9.4%
500-999	14.2%
1000+	13.2%

Employment by Ownership (1st Quarter 2019)



Ownership	Percentage
Federal Government	3.5%
State Government	2.2%
Local Government	14.2%
Private	80.1%

Employment by Industry (1st Quarter 2019)



Industry	Q1 2019 Employment	% of Total	Q4 2018 Employment	% of Total	Q1 2018 Employment	% of Total	Quarterly Change	Yearly Change
Natural Resources and Mining	1,250	1.1%	1,335	1.2%	1,434	1.3%	-6.4%	-12.8%
Construction	4,959	4.5%	5,015	4.6%	4,597	4.2%	-1.1%	7.9%
Manufacturing	18,220	16.6%	17,781	16.2%	17,618	16.2%	2.5%	3.4%
Trade, Transportation and Utilities	22,843	20.8%	23,114	21.0%	22,983	21.1%	-1.2%	-0.6%
Information	586	0.5%	577	0.5%	704	0.6%	1.6%	-16.8%
Financial Activities	4,141	3.8%	4,198	3.8%	4,282	3.9%	-1.4%	-3.3%
Professional and Business Services	6,718	6.1%	6,657	6.1%	6,444	5.9%	0.9%	4.3%
Education and Health Services	30,991	28.2%	30,892	28.1%	30,555	28.1%	0.3%	1.4%
Leisure and Hospitality	10,967	10.0%	10,981	10.0%	10,647	9.8%	-0.1%	3.0%
Other Services	2,327	2.1%	2,323	2.1%	2,383	2.2%	0.2%	-2.3%
Public Administration	7,004	6.4%	6,989	6.4%	7,124	6.5%	0.2%	-1.7%