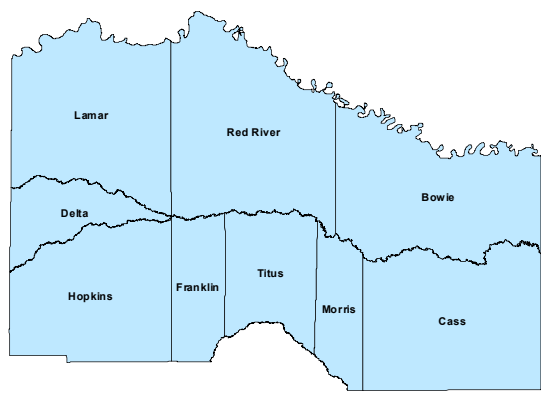
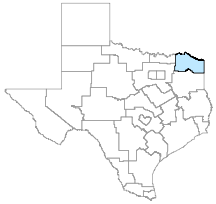


## North East Workforce Development Area

November 2019



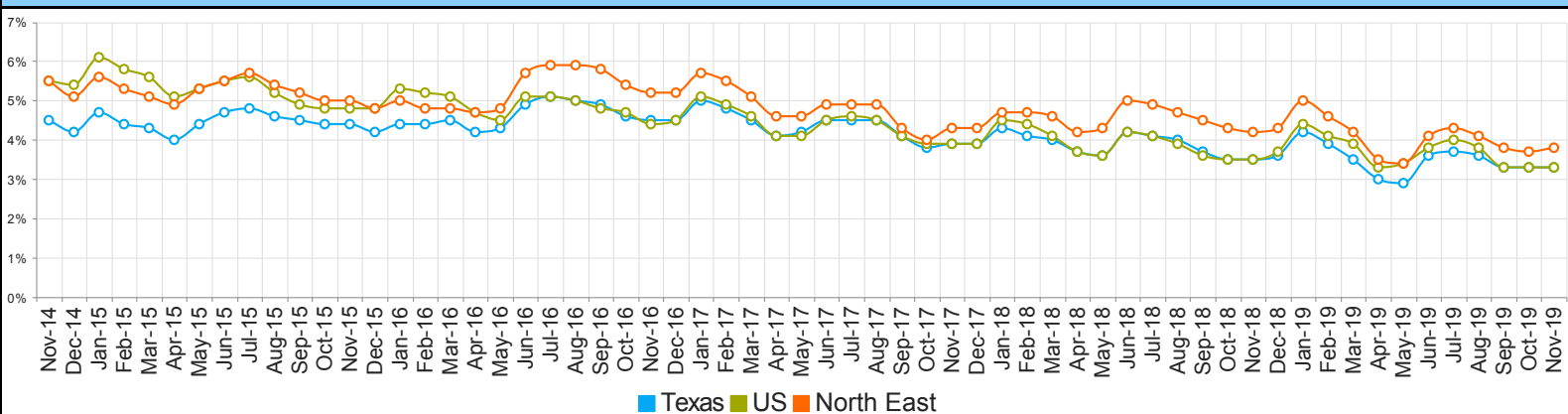
WDA Labor Force Statistics				
	Nov-19	Oct-19	Nov-18	Yearly Change
Civilian Labor Force	123,371	123,340	123,321	50
Employed	118,694	118,718	118,095	599
Unemployed	4,677	4,622	5,226	-549
Unemployment Rate	3.8%	3.7%	4.2%	-0.4%

Texas Labor Force Statistics				
	Nov-19	Oct-19	Nov-18	Yearly Change
Civilian Labor Force	14,265,562	14,190,783	13,961,940	303,622
Employed	13,788,541	13,723,103	13,475,980	312,561
Unemployed	477,021	467,680	485,960	-8,939
Unemployment Rate	3.3%	3.3%	3.5%	-0.2%

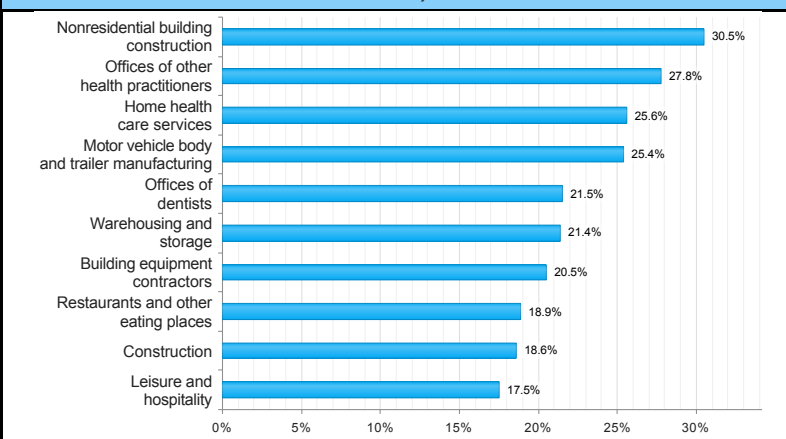
US Labor Force Statistics				
	Nov-19	Oct-19	Nov-18	Yearly Change
Civilian Labor Force	164,386,000	164,576,000	162,665,000	1,721,000
Employed	158,945,000	159,067,000	157,015,000	1,930,000
Unemployed	5,441,000	5,510,000	5,650,000	-209,000
Unemployment Rate	3.3%	3.3%	3.5%	-0.2%

Continued Claims for the Week of the 12th				
	Nov-19	Oct-19	Nov-18	Yearly Change
WDA	809	803	888	-79
Texas	93,207	89,985	83,685	9,522

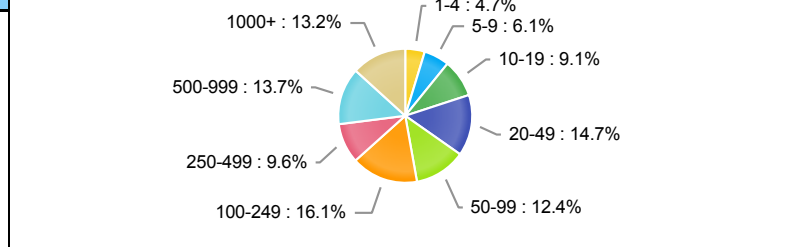
## Historical Unemployment Rates



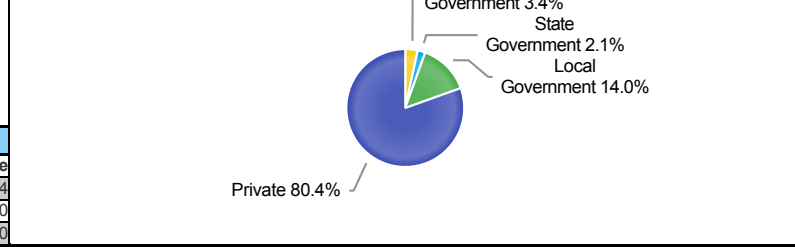
## Projected Top Ten Fastest Growing Industries in WDA (% Growth 2016-2026)



## Employment by Size Class (2nd Quarter 2019)



## Employment by Ownership (2nd Quarter 2019)

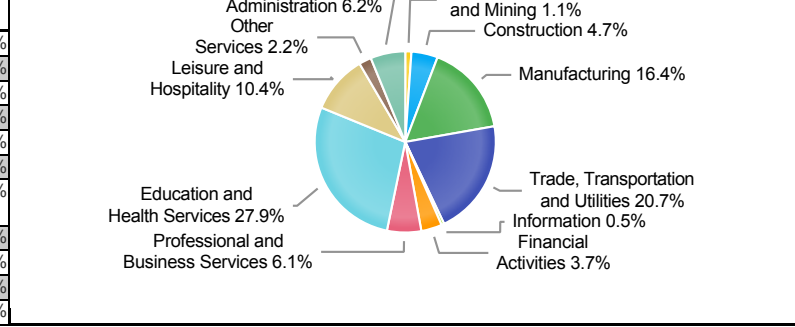


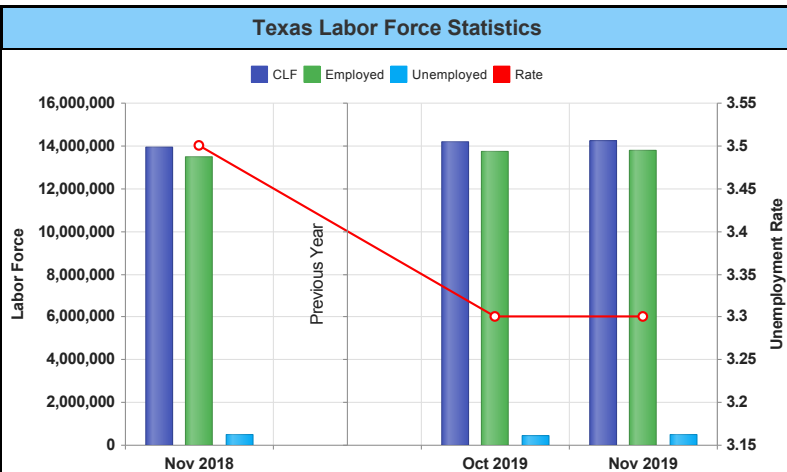
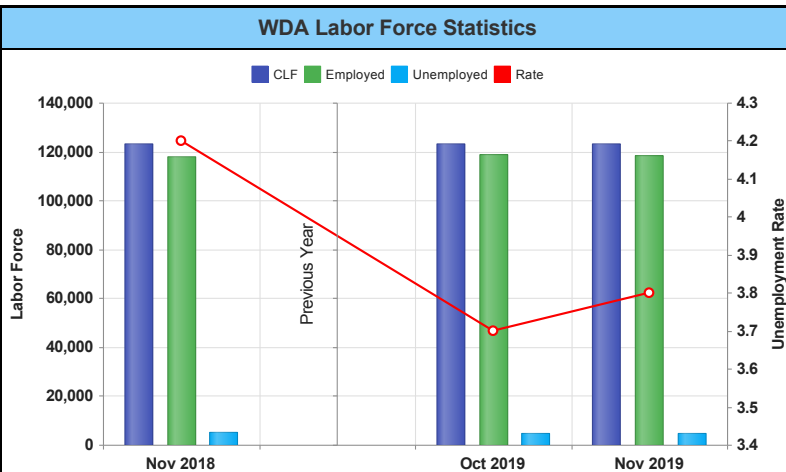
Average Weekly Wage (2nd Quarter 2019)					
	Q2 2019	Q1 2019	Q2 2018	Quarterly Change	Yearly Change
WDA	\$777	\$775	\$763	\$2	\$14
Texas	\$1,102	\$1,204	\$1,062	-\$102	\$40
US	\$1,095	\$1,184	\$1,055	-\$89	\$40

## Employment by Industry (2nd Quarter 2019, Percent Change)

Industry	Employment	% of Total	% Quarterly Change	% Yearly Change
Natural Resources and Mining	1,266	1.1%	0.7%	-4.0%
Construction	5,232	4.7%	5.3%	7.7%
Manufacturing	18,342	16.4%	0.9%	3.0%
Trade, Transportation and Utilities	23,188	20.7%	1.4%	0.7%
Information	610	0.5%	3.9%	-3.2%
Financial Activities	4,158	3.7%	0.7%	-3.0%
Professional and Business Services	6,789	6.1%	0.8%	4.1%
Education and Health Services	31,238	27.9%	0.8%	1.9%
Leisure and Hospitality	11,583	10.4%	5.8%	3.7%
Other Services	2,416	2.2%	3.6%	-1.1%
Public Administration	6,967	6.2%	-0.5%	-1.3%

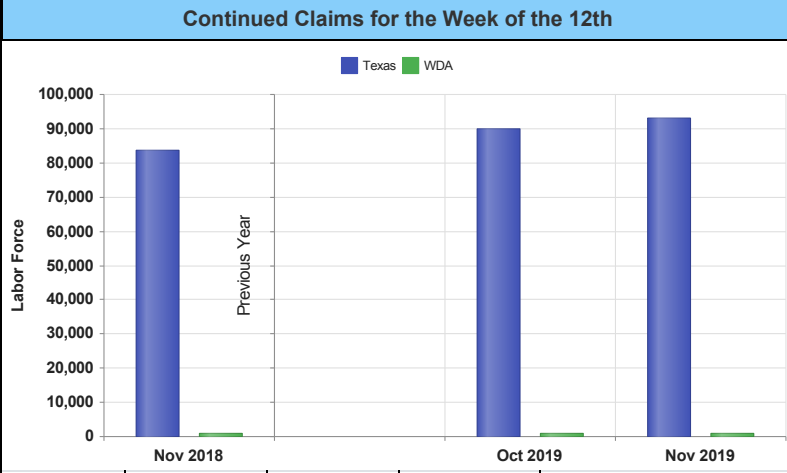
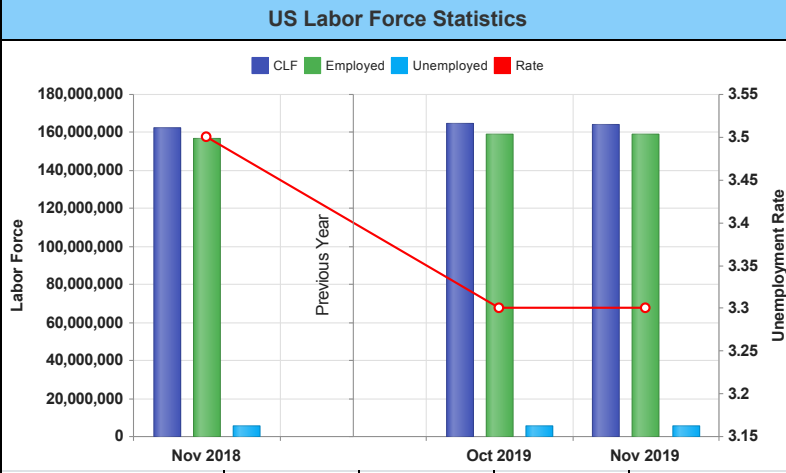
## Employment by Industry (2nd Quarter 2019)





	Nov-19	Oct-19	Nov-18	Yearly Change
Civilian Labor Force	123,371	123,340	123,321	50
Employed	118,694	118,718	118,095	599
Unemployed	4,677	4,622	5,226	-549
Unemployment Rate	3.8%	3.7%	4.2%	-0.4%

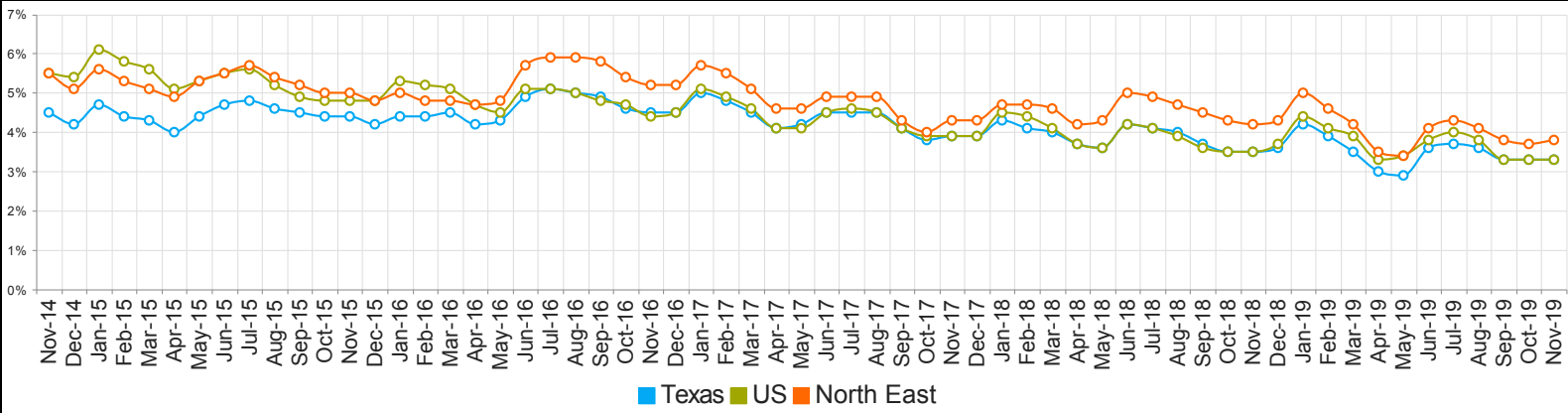
	Nov-19	Oct-19	Nov-18	Yearly Change
Civilian Labor Force	14,265,562	14,190,783	13,961,940	303,622
Employed	13,788,541	13,723,103	13,475,980	312,561
Unemployed	477,021	467,680	485,960	-8,939
Unemployment Rate	3.3%	3.3%	3.5%	-0.2%



	Nov-19	Oct-19	Nov-18	Yearly Change
Civilian Labor Force	164,386,000	164,576,000	162,665,000	1,721,000
Employed	158,945,000	159,067,000	157,015,000	1,930,000
Unemployed	5,441,000	5,510,000	5,650,000	-209,000
Unemployment Rate	3.3%	3.3%	3.5%	-0.2%

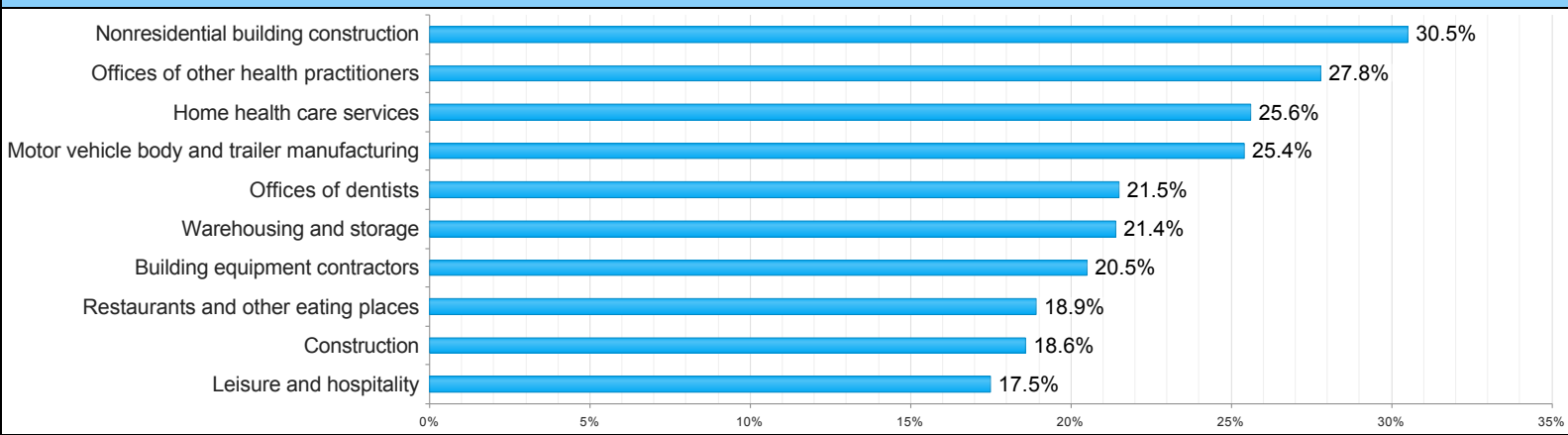
	Nov-19	Oct-19	Nov-18	Yearly Change
WDA	809	803	888	-79
Texas	93,207	89,985	83,685	9,522

### Historical Unemployment Rates



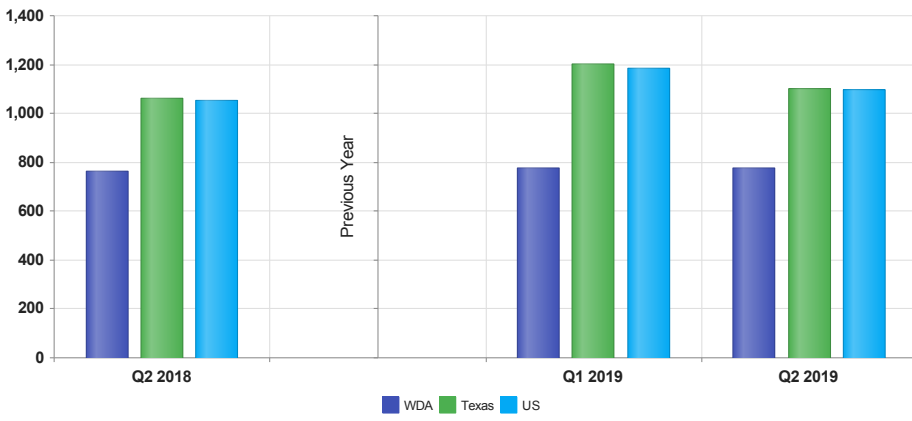
Months	WDA	Texas	US
Nov-19	3.8	3.3	3.3
Oct-19	3.7	3.3	3.3
Sep-19	3.8	3.3	3.3
Aug-19	4.1	3.6	3.8
Jul-19	4.3	3.7	4.0
Jun-19	4.1	3.6	3.8
May-19	3.4	2.9	3.4
Apr-19	3.5	3.0	3.3
Mar-19	4.2	3.5	3.9
Feb-19	4.6	3.9	4.1
Jan-19	5.0	4.2	4.4
Dec-18	4.3	3.6	3.7
Nov-18	4.2	3.5	3.5
Oct-18	4.3	3.5	3.5
Sep-18	4.5	3.7	3.6
Aug-18	4.7	4.0	3.9
Jul-18	4.9	4.1	4.1
Jun-18	5.0	4.2	4.2
May-18	4.3	3.6	3.6
Apr-18	4.2	3.7	3.7
Mar-18	4.6	4.0	4.1
Feb-18	4.7	4.1	4.4
Jan-18	4.7	4.3	4.5
Dec-17	4.3	3.9	3.9
Nov-17	4.3	3.9	3.9
Oct-17	4.0	3.8	3.9
Sep-17	4.3	4.1	4.1
Aug-17	4.9	4.5	4.5
Jul-17	4.9	4.5	4.6
Jun-17	4.9	4.5	4.5
May-17	4.6	4.2	4.1
Apr-17	4.6	4.1	4.1
Mar-17	5.1	4.5	4.6
Feb-17	5.5	4.8	4.9
Jan-17	5.7	5.0	5.1
Dec-16	5.2	4.5	4.5
Nov-16	5.2	4.5	4.4
Oct-16	5.4	4.6	4.7
Sep-16	5.8	4.9	4.8
Aug-16	5.9	5.0	5.0
Jul-16	5.9	5.1	5.1
Jun-16	5.7	4.9	5.1
May-16	4.8	4.3	4.5
Apr-16	4.7	4.2	4.7
Mar-16	4.8	4.5	5.1
Feb-16	4.8	4.4	5.2
Jan-16	5.0	4.4	5.3
Dec-15	4.8	4.2	4.8
Nov-15	5.0	4.4	4.8
Oct-15	5.0	4.4	4.8
Sep-15	5.2	4.5	4.9
Aug-15	5.4	4.6	5.2
Jul-15	5.7	4.8	5.6
Jun-15	5.5	4.7	5.5
May-15	5.3	4.4	5.3
Apr-15	4.9	4.0	5.1
Mar-15	5.1	4.3	5.6
Feb-15	5.3	4.4	5.8
Jan-15	5.6	4.7	6.1
Dec-14	5.1	4.2	5.4
Nov-14	5.5	4.5	5.5

**Projected Top Ten Fastest Growing Industries in WDA (% Growth 2016-2026)**



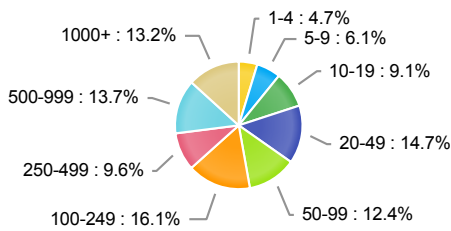
Industry Title	Percent Change
Nonresidential building construction	30.5
Offices of other health practitioners	27.8
Home health care services	25.6
Motor vehicle body and trailer manufacturing	25.4
Offices of dentists	21.5
Warehousing and storage	21.4
Building equipment contractors	20.5
Restaurants and other eating places	18.9
Construction	18.6
Leisure and hospitality	17.5

### Average Weekly Wage (2nd Quarter 2019)



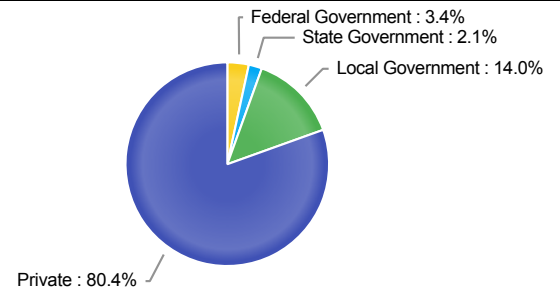
	Q2 2019	Q1 2019	Q2 2018	Quarterly Change	Yearly Change
WDA	\$777	\$775	\$763	\$2	\$14
Texas	\$1,102	\$1,204	\$1,062	\$-102	\$40
US	\$1,095	\$1,184	\$1,055	\$-89	\$40

### Employment by Size Class (2nd Quarter 2019)



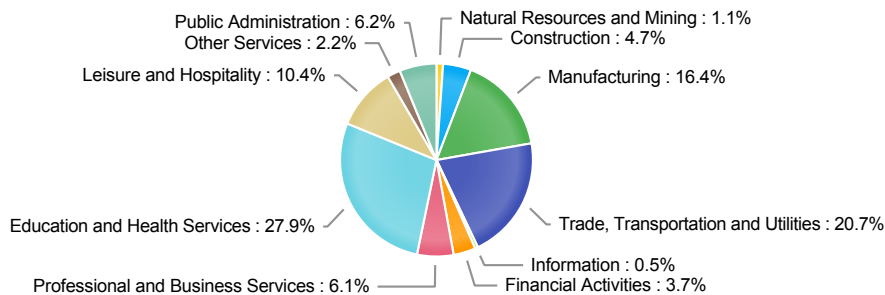
Number of Employees in Firm	Percentage
1-4	4.7%
5-9	6.1%
10-19	9.1%
20-49	14.7%
50-99	12.4%
100-249	16.1%
250-499	9.6%
500-999	13.7%
1000+	13.2%

### Employment by Ownership (2nd Quarter 2019)



Ownership	Percentage
Federal Government	3.4%
State Government	2.1%
Local Government	14.0%
Private	80.4%

### Employment by Industry (2nd Quarter 2019)



Industry	Q2 2019 Employment	% of Total	Q1 2019 Employment	% of Total	Q2 2018 Employment	% of Total	Quarterly Change	Yearly Change
Natural Resources and Mining	1,266	1.1%	1,257	1.1%	1,319	1.2%	0.7%	-4.0%
Construction	5,232	4.7%	4,967	4.5%	4,857	4.4%	5.3%	7.7%
Manufacturing	18,342	16.4%	18,182	16.5%	17,800	16.2%	0.9%	3.0%
Trade, Transportation and Utilities	23,188	20.7%	22,866	20.8%	23,018	21.0%	1.4%	0.7%
Information	610	0.5%	587	0.5%	630	0.6%	3.9%	-3.2%
Financial Activities	4,158	3.7%	4,130	3.8%	4,287	3.9%	0.7%	-3.0%
Professional and Business Services	6,789	6.1%	6,738	6.1%	6,520	5.9%	0.8%	4.1%
Education and Health Services	31,238	27.9%	30,981	28.2%	30,650	27.9%	0.8%	1.9%
Leisure and Hospitality	11,583	10.4%	10,949	10.0%	11,168	10.2%	5.8%	3.7%
Other Services	2,416	2.2%	2,333	2.1%	2,444	2.2%	3.6%	-1.1%
Public Administration	6,967	6.2%	7,005	6.4%	7,056	6.4%	-0.5%	-1.3%